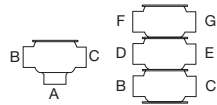


MODEL NUMBER EXAMPLE - ALL PORTS TRI-CLAMP																									
7610	-	012	S	M	2	H40	-	1	S	S	S	T	-	Y	-	S	IT								
1	2	3	4	5	6	7	8	9	10	11	12	13	14												
COMBINATION PORTS WELD & TRI-CLAMP																									
7610	-	012	S	S	N	N	N	N	W	M	M	2	H40	-	1	S	S	S	T	-	Y	-	S	IT	
1	2	3	4	5	6	7	8	9	10	11	12	13	14												

0000	000	0	0	0000000	0	000	0	0	0	0	0	0	0	0	00*
			A	B	C	D	E	F							



- 1 MODEL**  
 7610 - Unique 7000  
 8610 - Unique 7000 Aseptic  
 7620 - Unique 7000 Tangential Outlet (Horizontal mounting)  
 7630 - Unique 7000 Tank Outlet (Vertical Mounting)  
 7710 - Unique 7000 Regulating
- 2 BODY STYLE**  
 200 - Shut-off (2 port)  
 300 - Shut-off (3 port)  
 208 - Shut-off Tangential Right (2 port)  
 207 - Shut-off Tangential Left (2 port)  
 309 - Shut-off Tangential Cross (3 port)  
 210 - Changeover (3 port)  
 220 - Changeover (4 port)  
 310 - Changeover (4 port)  
 320 - Changeover (5 port)  
 001 - Tank Outlet RA (2 port)  
 002 - Tank Outlet RA (3 port)  
 010 - Tank Outlet RA (2 port)  
 020 - Tank Outlet RA (3 port)  
 011 - Shut-off RA (2 port)  
 021 - Shut-off RA (3 port)  
 012 - Shut-off RA (3 port)  
 022 - Shut-off RA (4 port)  
 111 - Changeover RA (3 port)  
 211 - Changeover RA (4 port)  
 121 - Changeover RA (4 port)  
 112 - Changeover RA (4 port)  
 212 - Changeover RA (5 port)  
 222 - Changeover RA (6 port)  
 900 - Y-Body

- 3 BUILD IN DIMENSION**  
 S - Standard  
 C - 700 Series Build Dimensions (Center-Face, shut-off only)
- 4 CONNECTION PORTS - ALL IDENTICAL**  
 W - Weld ends - all ports  
 M - Tri-Clamp - all ports  
 T - Threaded Bevel Seat - all ports
- CONNECTION PORTS - MIXED**  
 S - Mixed Connection Types  
 W - Weld ends                      C - Union DIN  
 M - Tri-Clamp                      D - DIN Clamp  
 I - ISO Clamp                      T - Threaded Bevel Seat  
 S - Union SMS                      N - No Port
- 5 SURFACE FINISH**  
 1 - 3A (OD = Dust blast; ID = 32 Ra)  
 2 - 3A Bright - Std. (OD=Bright; ID=32 Ra)  
 3 - PC (3A) (OD = Dust Blast; ID = 20 Ra)  
 4 - PL (3A) (OD = Bright; ID = 20 Ra)  
 5 - PP (3A) (OD = Bright; ID = 15 Ra)  
 6 - PM (3A) (OD = Bright; ID = 15 Ra w/EP)
- 6 SIZE PORT**  
 H10 -1"  
 H15 -1½"  
 H20 -2"  
 H25 -2½"  
 H30 -3"  
 H40 -4"
- 7 ACTUATION MODE**  
 1 - Norm. Open/Spring to Open  
 2 - Norm. Open/Spring to Open (RA)  
 2 - Norm. Closed/Spring to Close  
 1 - Norm. Closed/Spring to Close (RA)  
 3 - Air to air  
 4 - Two-step/Three Position (NO) divert only  
 5 - Manual  
 6 - Two-step/Three Position (NC)
- 8 ACTUATOR STROKE**  
 S - Standard  
 L - Long
- 9 ACTUATOR TYPE**  
 R - Maintainable  
 S - Semi-Maintainable
- 10 HOLDING PRESSURE CAPABILITY**  
 S - Standard  
 H - High Pressure

- 11 STEM TYPE**  
 S - Elastomer Plug Seal  
 T - TR2/PTFE Plug Seal  
 A - 1½" Regulating Kv14  
 H - 1½" Regulating Kv16  
 I - 1½" Regulating Kv25  
 B - 1½" Regulating Kv44  
 G - 2" Regulating Kv9  
 K - 2" Regulating Kv34  
 L - 2" Regulating Kv52  
 C - 2" Regulating Kv75  
 J - 2 ½" Regulating Kv27  
 D - 2 ½" Regulating Kv106  
 M - 3" Regulating Kv59  
 N - 3" Regulating Kv100  
 E - 3" Regulating Kv171  
 O - 4" Regulating Kv125  
 P - 4" Regulating Kv164  
 F - 4" Regulating Kv250
  - 12 WETTED SEAL MATERIALS**  
 E - EPDM  
 U - HNBR  
 Y - FPM (Fluoroelastomer)
  - 13 S - ASSEMBLED VALVE**  
 D - 7630 VALVE WITH FLANGE
  - 14 TOP UNIT TYPE**  
 NNN - No Top  
 TAN - ThinkTop digital 0 solenoids  
 TBN - ThinkTop digital 1 solenoid  
 TCN - ThinkTop digital 2 solenoids  
 TEN - ThinkTop ASI 0 solenoids  
 TFN - ThinkTop ASI 1 solenoid  
 TGN - ThinkTop ASI 2 solenoids  
 TIN - ThinkTop DeviceNet 0 solenoids  
 TJN - ThinkTop DeviceNet 1 solenoid  
 TKN - ThinkTop DeviceNet 2 solenoids  
 TMN - ThinkTop Digital 110V 0 solenoid  
 TNN - ThinkTop Digital 110V 1 solenoid  
 TON - ThinkTop Digital 110V 2 solenoid  
 BAN - ThinkTop Basic Digital 0 solenoid  
 BBN - ThinkTop Basic Digital 1 solenoid  
 BCN - ThinkTop Basic Digital 2 solenoid  
 ITN - IndiTop Digital 0 solenoid  
 04 - GreenTop 2 Mech Switches  
 0 solenoid  
 12 - GreenTop 2 Prox Switches  
 0 solenoid  
 18 - GreenTop 24 VDC 2 Mech Switches  
 1 solenoid  
 20 - GreenTop 110 VAC 2 Mech Switches  
 1 solenoid  
 34 - GreenTop 24 VDC 2 Prox Switches  
 1 solenoid  
 36 - GreenTop 110 VAC 2 Prox Switches  
 1 solenoid
- Set-up Number chart (GreenTop)  
 1 - No Solenoid  
 2 - Normally Open valve closes, Normally closed valve opens when Solenoid is De-energized  
 5 - When Solenoid is Energized  
 7 - Air to Air Only